



Operating Motel Real Estate & Business

1315 N. State Street, Iola, Kansas



SALE PRICE: \$1,300,000 | 24,613 SF MOTEL

DEMOGRAPHICS

	1 mile	3 miles	5 miles
Estimated Population	2,992	6,045	7,148
Avg. Household Income	\$63,649	\$67,270	\$70,424

- 58 Room Hospitality Asset (\$22,413/Room)
- All 58 rooms include air conditioning, in-room refrigerators, microwaves, coffee makers, and premium cable
- Free continental breakfast, free WiFi, free self-parking, a restaurant, bar/lounge, snack bar/deli, business center, and laundry facilities on-site
- In Place Cash Flow and strong occupancy rates
- 1.5 hours from Kansas City



CLICK HERE TO VIEW MORE LISTING INFORMATION

For More Information Contact:

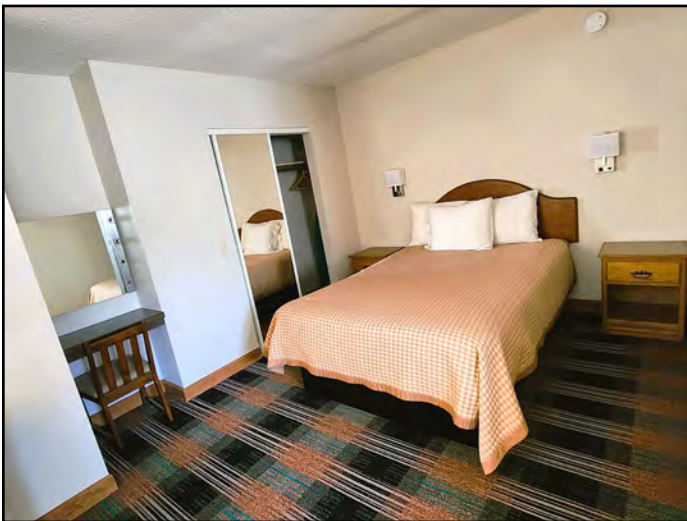
JOSH ROTHSCHILD | 816.412.7348 | jrothschild@blockandco.com

DANIEL BROCATO | 816.412.7303 | dbrocato@blockandco.com

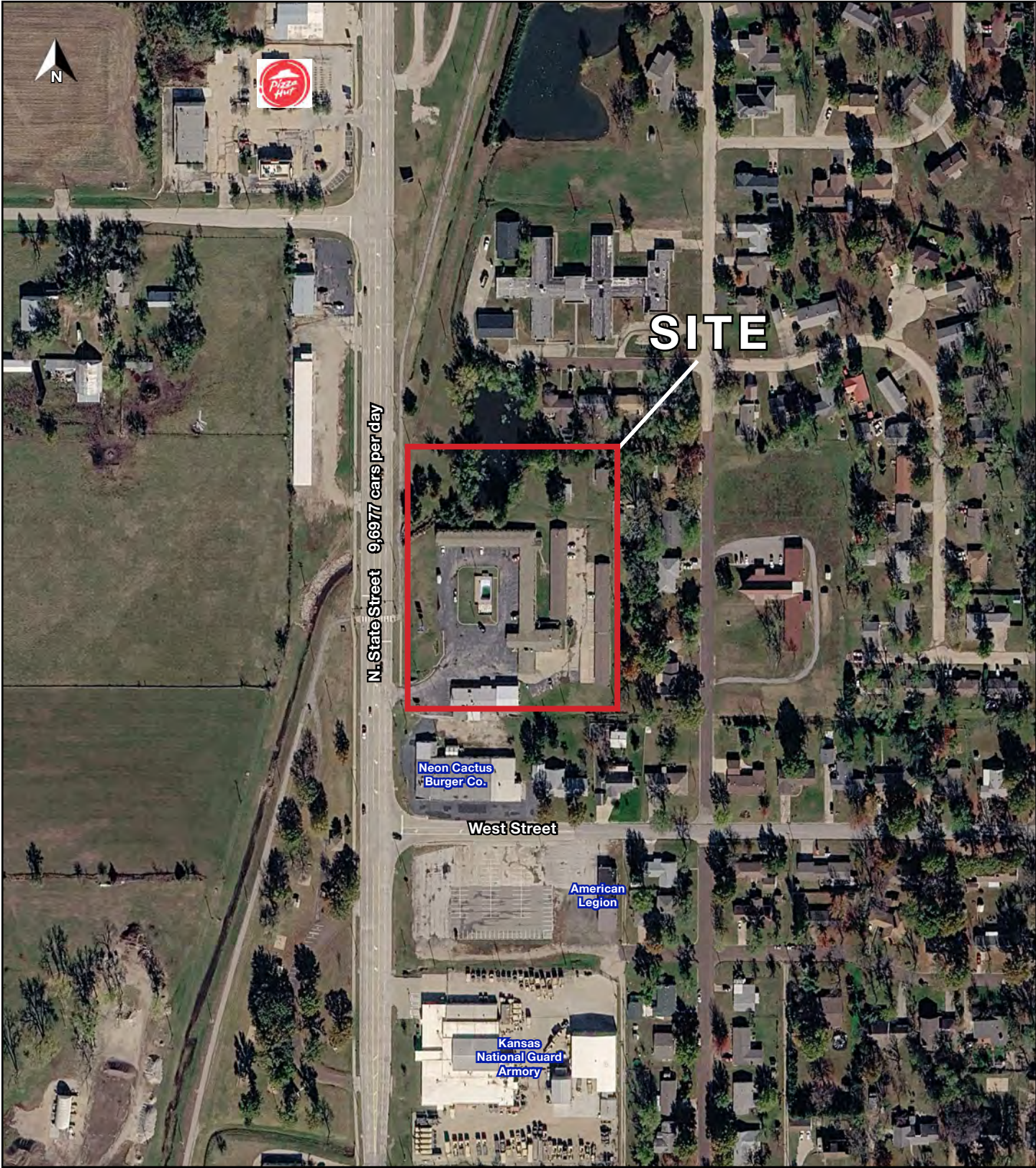
Exclusive Agents



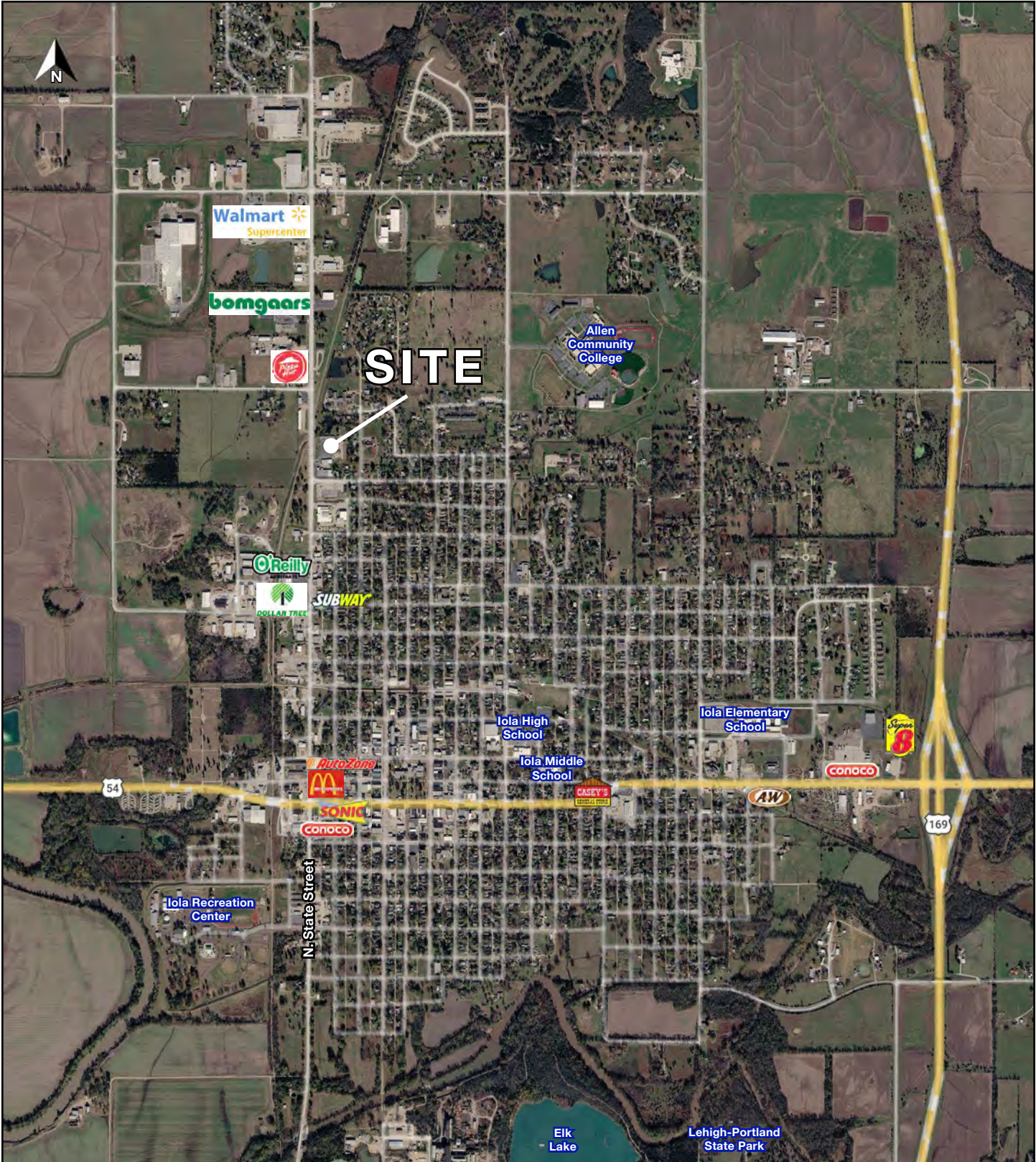
PHOTOS



AERIAL



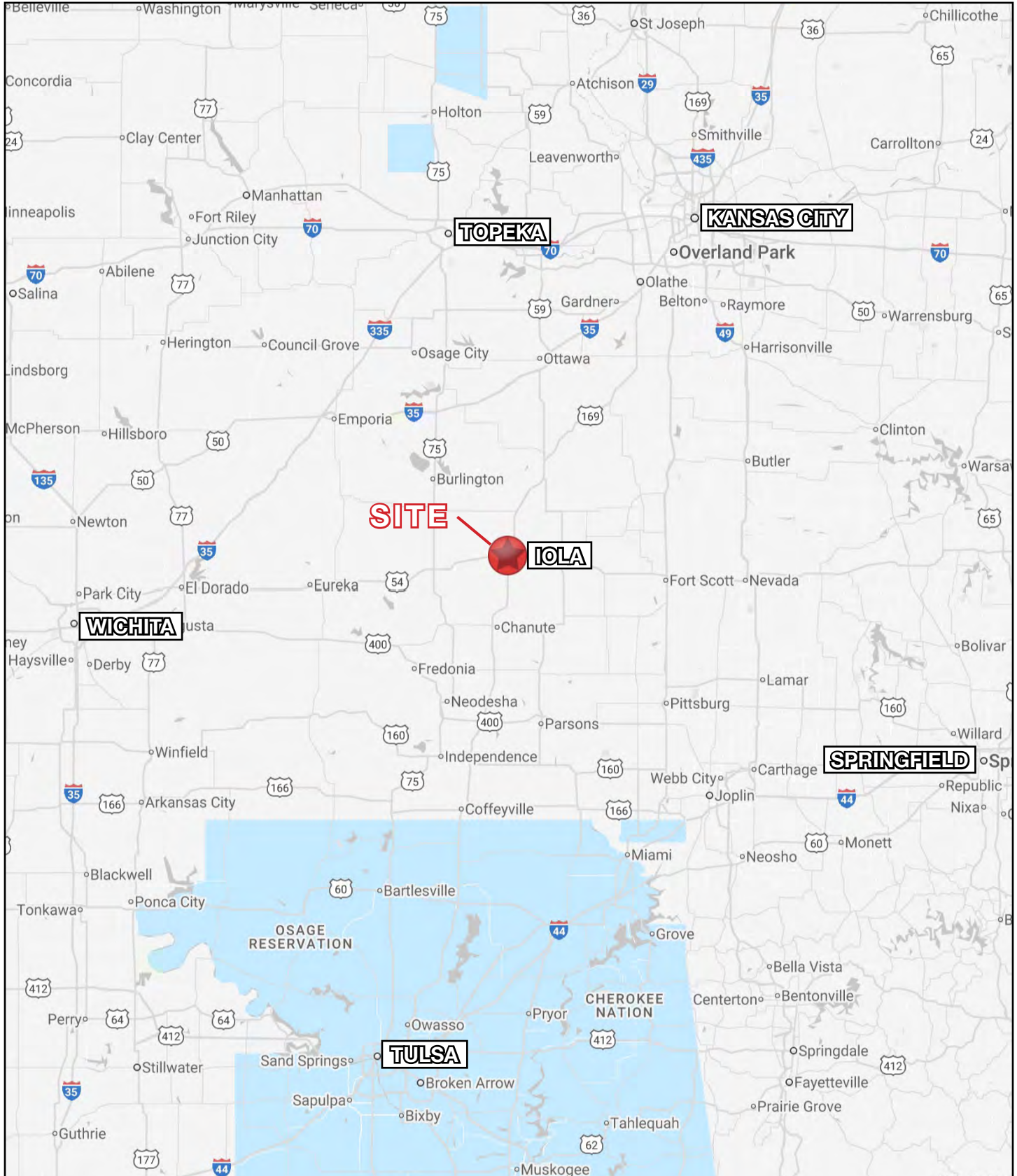
AERIAL





Operating Motel Real Estate & Business

1315 N. State Street, Iola, Kansas





Operating Motel Real Estate & Business

1315 N. State Street, Iola, Kansas

1315 N. State Street Iola, KS 66749	1 mi radius	3 mi radius	5 mi radius
Population			
2025 Estimated Population	2,992	6,045	7,148
2030 Projected Population	2,743	5,600	6,671
2020 Census Population	3,016	6,212	7,376
2010 Census Population	3,157	6,497	7,743
Projected Annual Growth 2025 to 2030	-1.7%	-1.5%	-1.3%
Historical Annual Growth 2010 to 2025	-0.3%	-0.5%	-0.5%
2025 Median Age	34.4	35.9	36.9
Households			
2025 Estimated Households	1,243	2,535	2,994
2030 Projected Households	1,125	2,312	2,742
2020 Census Households	1,258	2,609	3,092
2010 Census Households	1,291	2,659	3,160
Projected Annual Growth 2025 to 2030	-1.9%	-1.8%	-1.7%
Historical Annual Growth 2010 to 2025	-0.2%	-0.3%	-0.4%
Race and Ethnicity			
2025 Estimated White	87.9%	88.7%	89.5%
2025 Estimated Black or African American	3.7%	3.2%	2.8%
2025 Estimated Asian or Pacific Islander	1.2%	1.3%	1.2%
2025 Estimated American Indian or Native Alaskan	0.8%	0.8%	0.8%
2025 Estimated Other Races	6.4%	6.1%	5.7%
2025 Estimated Hispanic	4.9%	4.8%	4.5%
Income			
2025 Estimated Average Household Income	\$63,649	\$67,270	\$70,424
2025 Estimated Median Household Income	\$50,997	\$53,147	\$55,416
2025 Estimated Per Capita Income	\$26,915	\$28,612	\$29,828
Education (Age 25+)			
2025 Estimated Elementary (Grade Level 0 to 8)	2.2%	1.8%	1.6%
2025 Estimated Some High School (Grade Level 9 to 11)	3.9%	6.2%	5.8%
2025 Estimated High School Graduate	40.4%	37.2%	36.3%
2025 Estimated Some College	22.8%	23.1%	24.0%
2025 Estimated Associates Degree Only	7.1%	7.7%	8.1%
2025 Estimated Bachelors Degree Only	16.0%	16.9%	16.8%
2025 Estimated Graduate Degree	7.6%	7.1%	7.3%
Business			
2025 Estimated Total Businesses	187	288	300
2025 Estimated Total Employees	2,030	3,469	3,533
2025 Estimated Employee Population per Business	10.9	12.0	11.8
2025 Estimated Residential Population per Business	16.0	21.0	23.8

©2026, Sites USA, Chandler, Arizona, 480-491-1112 Demographic Source: Applied Geographic Solutions 11/2025, TIGER Geography - RS1